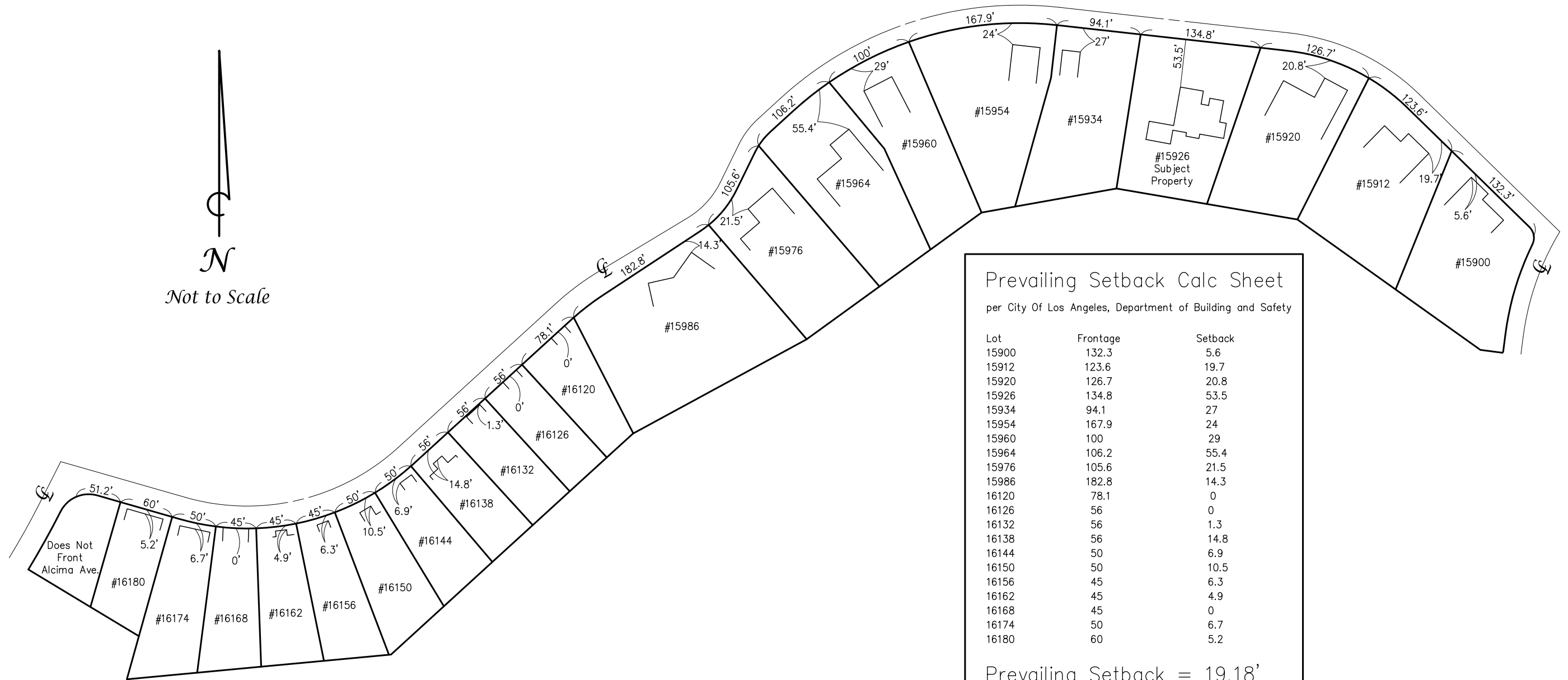
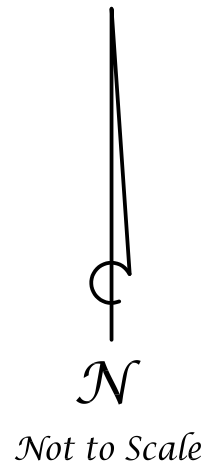


Prevailing Setback



Prevailing Setback Calc Sheet

per City Of Los Angeles, Department of Building and Safety

Lot	Frontage	Setback
15900	132.3	5.6
15912	123.6	19.7
15920	126.7	20.8
15926	134.8	53.5
15934	94.1	27
15954	167.9	24
15960	100	29
15964	106.2	55.4
15976	105.6	21.5
15986	182.8	14.3
16120	78.1	0
16126	56	0
16132	56	1.3
16138	56	14.8
16144	50	6.9
16150	50	10.5
16156	45	6.3
16162	45	4.9
16168	45	0
16174	50	6.7
16180	60	5.2

Prevailing Setback = 19.18'

Total number of lots entered = 21
 Total frontage entered = 1,866.0'
 40% of Total frontage = 746.4'

Number of lots used in the calculations = 6
 Setback range used = 14.3'-24.3'
 Total frontage used in the calculations = 762.6'

Lots Used: 15912, 15920, 15954, 15976, 15986, 16138